

## Creating Data

### Working guides

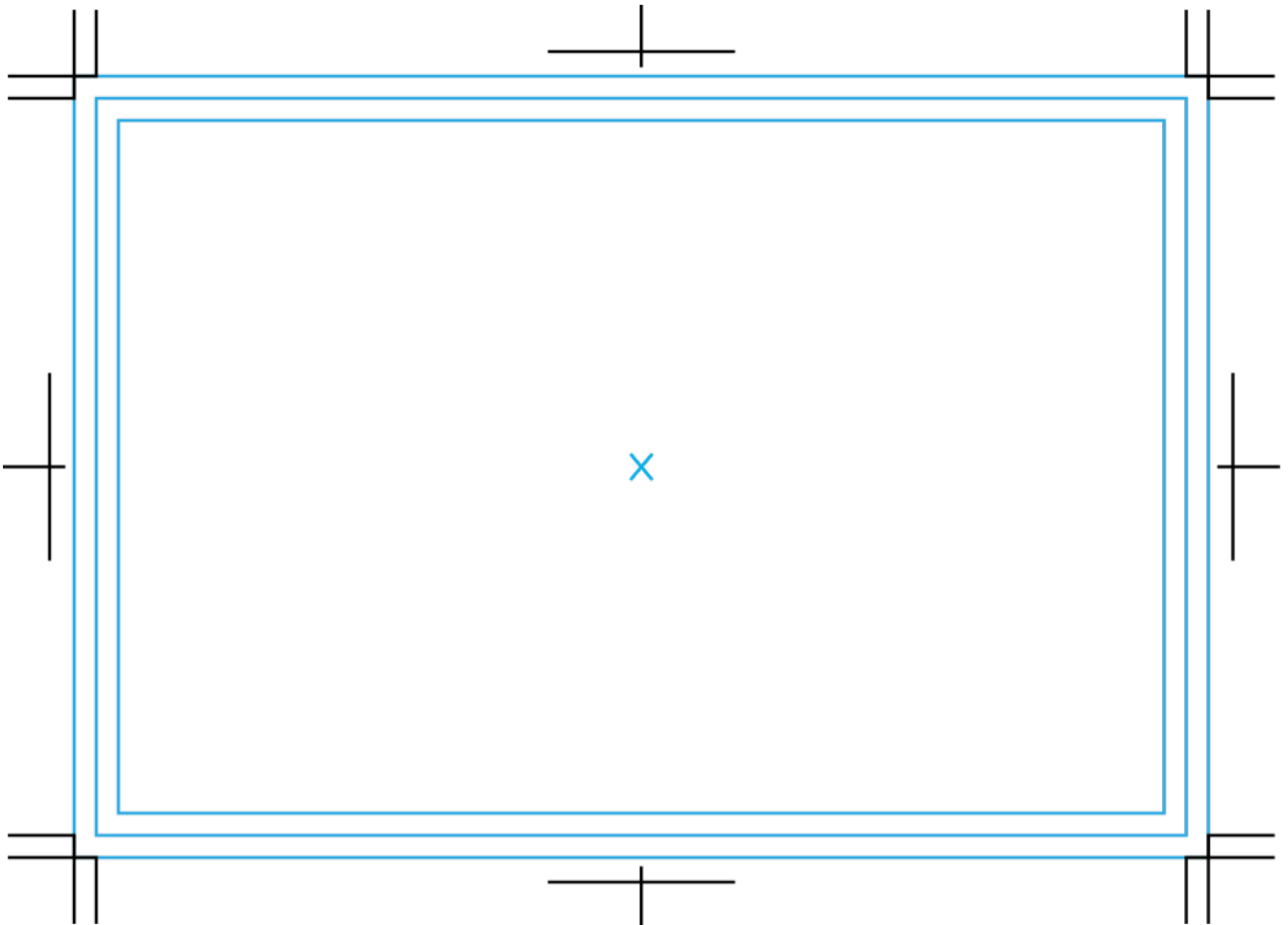
[What are guides?](#) | [Creating objects guides](#) | [Creating line guides](#) | [Lock, delete or release guides](#) | [Converting text to guides](#)

#### What are guides?

---

Guides help you align text and control graphic objects with ease in Illustrator. Straight line guides can be created by holding and dragging out from the ruler. Or, you can use any pretty much any path to make a guide. This means you can use a rectangle, circle or hand-drawn paths as a guide.

By default guide lines are light blue, solid lines but they can be edited to be any colour or to dots by adjusting the Illustrator preferences. Don't worry, these lines do not print! When you create guides they are unlocked so you can move them, modify them, delete them or lock them in place when you are done with them.



Before we start off let's make sure you have set guides as viewable or you won't see them! You can check by selecting the menu up top: View > Guides > Show Guides. Now, you may see 3 guide rectangles on our template now, the outer one represents the bleed area, the middle one represents where the trimming will happen and the innermost one represents the safety area, where you should keep all your important content inside of.

## Creating object guides in Illustrator

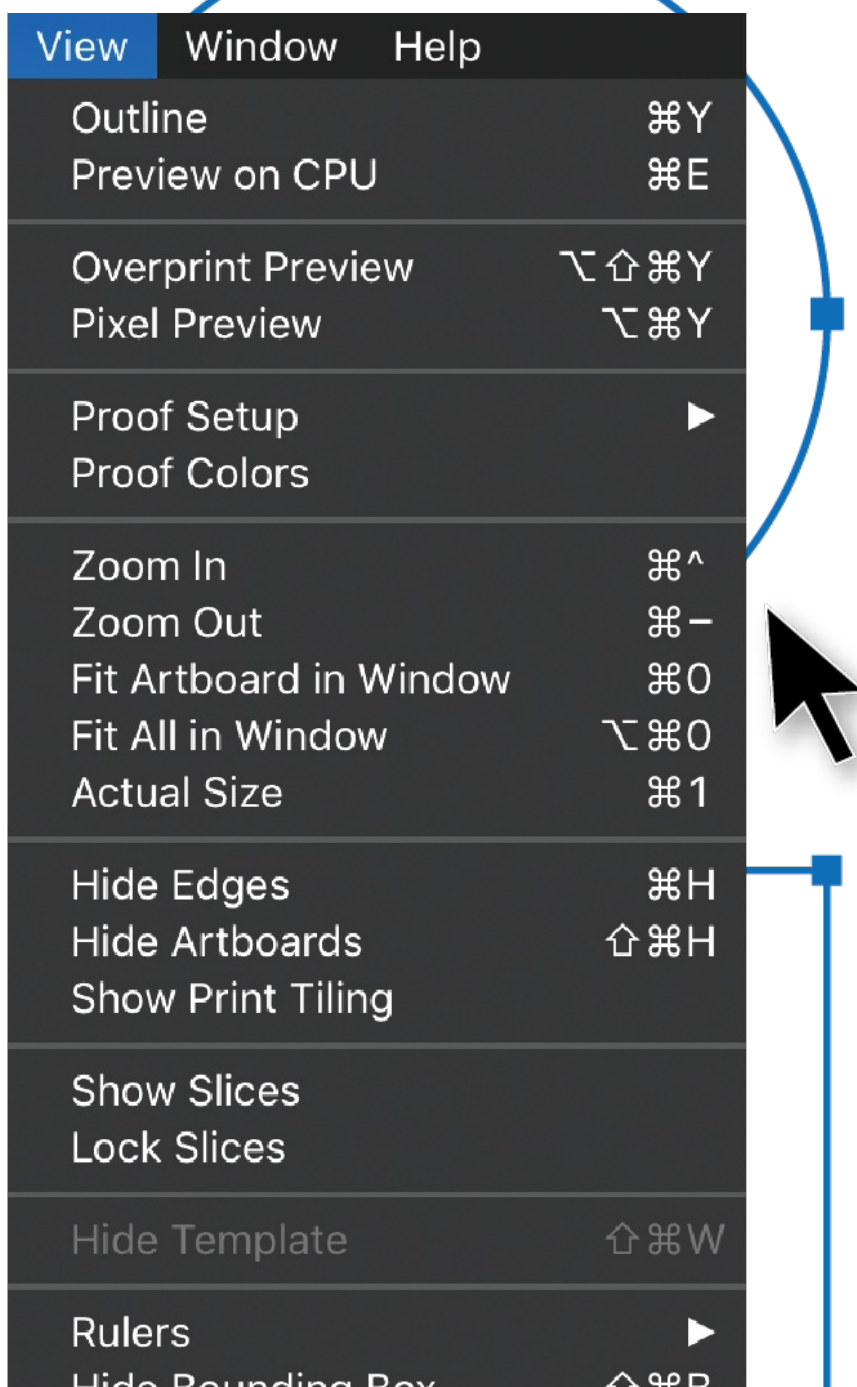
Converting an object into a guide is really simple. Follow the steps below to learn how to create object guides.

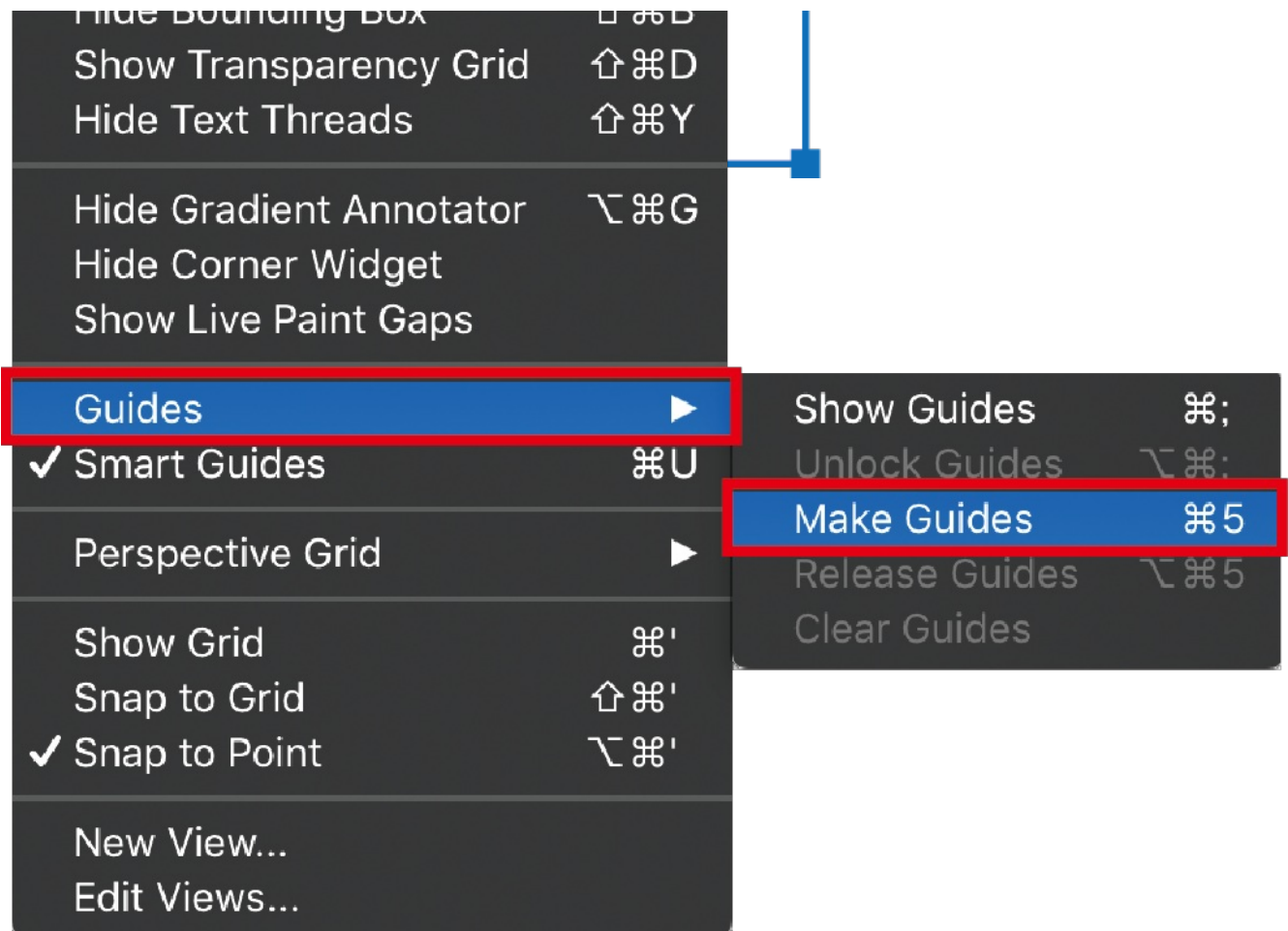
### Step 1

Select a tool on the left and create your shape.

### Step 2

Select the object you want to make into a guide, then from the View menu go to Guides > Make Guides.



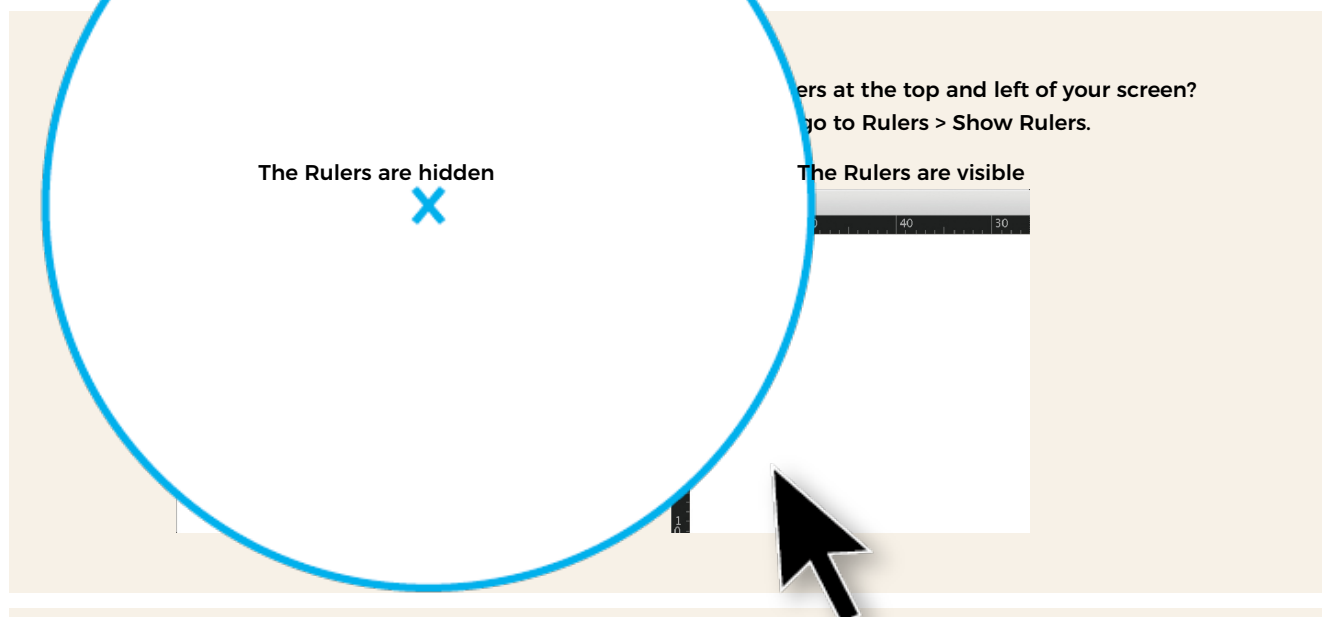


### Step 3

Voila! You have a guide in the shape of your object.

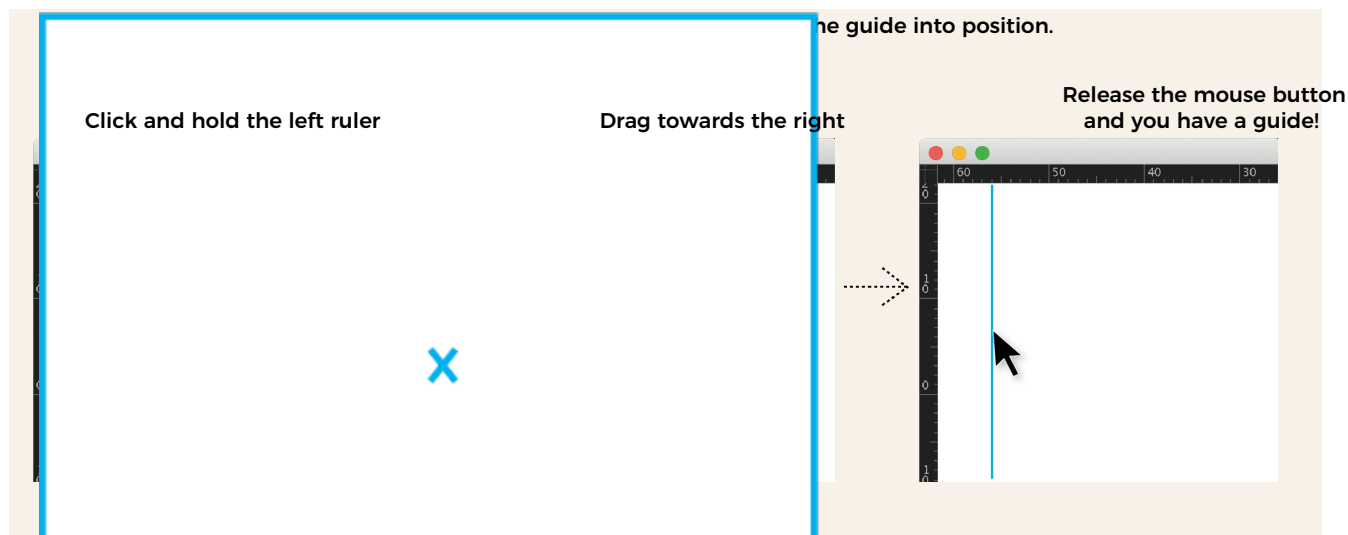
## Creating a guide

Straight horizontal guides: Click on the ruler area, and dragging out with your mouse.



### Step 2

Position the mouse cursor on the left ruler to make a vertical guide or on the



To

To

To

To delete one guide, click on the guide you want to delete and **Edit > Cut** or **Edit > Clear**

To delete all guides at once: select **View > Guides > Clear Guides**

To release the guide (turning it back into a regular object), select the guide and choose **View > Guides > Release Guides**

## Converting text into guides

Something else you can create guides from is text. This can come in handy when you need to leave important information regarding direction, orientation, folding area, or any other non-printing notes.

Select your text. Convert to outlines by selecting: **Type > Create Outlines**

Then, select your outlined text and from the View menu and select: **Guides > Make Guides**

PRINT

Editable text

PRINT

Outlined text

# PRINT

Guides